



INTRODUCTION

- Textiles Testing Laboratories India (P) Limited (TTL) has been set up to meet the internal and external customer requirements. The company has many overseas customers having requirements of quality goods / products manufactured by EEGCPL are ensured in our laboratory.
- This company meets the regulatory requirements stipulated by the local state and central governments and other regulatory bodies. Further the Eastman Exports Global Clothing (P) Ltd has decided that the Textiles Testing Laboratories India (P) Limited (TTL) should be accredited by NABL. Accordingly, the Management System is implemented to meet and comply with the requirements stipulated in the International Standard ISO / IEC 17025:2005 and criteria stipulated by NABL.



STRENGTHS



STRENGTHS

- ISO 17025 : 2005 Accredited Laboratory
- Buyer Specific Protocol Execution & Support
- Technical Review and Coordination Team
- Trained Expertise Technicians
- System Driven Process flow with list of Critical Control points to deliver quality results

TRACEABILITY OF EQUIPMENTS

- Lab uses calibration which traceable to NIST/NPL
- Calibration and Maintenance in accordance with Schedules
- Calibrations made inline with specific requirement of the test methods



TEST METHODS



International
Organization for
Standardization



European Committee for Standardization
Comité Européen de Normalisation
Europäisches Komitee für Normung



European Committee for Standardization
Comité Européen de Normalisation
Europäisches Komitee für Normung



American Association of
Textile Chemists and Colorists

© The International Association for Textile Professionals



Deutsches Institut für Normung e. V.

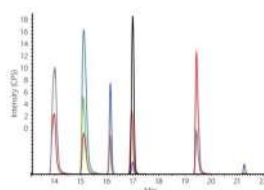
TRAININGS

- Class room Trainings
- Current standards updates
- Practical Comparisons & Evaluation of Technicians
- Seminars
- Tests & Evaluation
- Refreshment Training



QUALITY CONTROL ACTIVITIES

- Repeatability Analysis
- Standards Check
- Duplicate Analysis
- Blank Verification
- Standard Spikes
- Proficiency Test programs



ACCREDITATIONS

- ISO 17025:2005
- Buyer Accreditations
 - Marks & Spencer
 - NEXT
 - Migros
 - Levis
 - Nike
 - Decathlon
 - C&A
 - GAP
 - Puma
 - Tommy Hilfiger



ACCREDITATIONS

The ACCREDITATIONS section features a collection of logos for retail brands and accreditation bodies. The brands include YOUR M&S, GAP, C&A, MIGROS, next, PUMA, LEVI'S, NIKE, and TOMMY HILFINGER. The accreditation bodies are represented by the Bureau of Indian Standards (BIS) logo and the Bureau of Metrology logo.

APPROVALS

The APPROVALS section features logos for retail brands: PVH, QUIKSILVER, and TESCO.

MAJOR TESTS



MAJOR TESTS

- **Chemical & Eco tests**
 - Banned Azo dyes
 - Phthalate Content
 - Organo metallic tin
 - Chlorinated organic carrier
 - Chlorophenols (PCP etc..)
 - Formaldehyde Content
 - pH Value
 - Odor test
 - Fiber Content



MAJOR TESTS

- **Colour Fastness**
 - Colour fastness to washing
 - Colour Fastness to perspiration
 - Colour Fastness to water
 - Colour Fastness to chlorinated water
 - Colour Fastness to sea water
 - Colour Fastness to chlorine & non chlorine bleach
 - Colour fastness to saliva
 - Colour fastness to rubbing
 - Colour fastness to dye transfer in storage
 - Colour Fastness to dry heat & Hot pressing
 - Instrumental colour assessment (DE*) & Whiteness Index measurement



MAJOR TESTS

- **Durability**
 - Pilling resistance – Pill box
 - Pilling resistance – martindale
 - Abrasion resistance – Martindale
 - Dimensional stability to washing
 - Spirality
 - Appearance after washing
 - Smoothness appearance after washing
 - Print durability as per UK retailer's methods
 - Stretch & Recovery Tests
 - Bursting Strength



MAJOR TESTS

- Specification tests
 - Weight per unit area (gsm)
 - Yarn count
 - Fabric count
 - Stitch length
 - Course length



MAJOR TESTS

- Performance Tests
 - Wicking
 - Drying Rate
 - Water Absorbency
 - Stretch & Recovery Testing



INSTRUMENTATIONS

GCMS – GAS CHROMATOGRAPHY MASS SPECTROPHOTOMETER (AGILENT)



- Tests Performed
 - Banned Aromatic Amines
 - Phthalate Content
 - Chlorinated Carriers
 - Chlorophenols
 - Organotin compounds
 - Volatiles

UV VISIBLE SPECTROPHOTOMETER



- ▶ Tests performed
 - ▶ Formaldehyde Content in Extract of Textiles
 - ▶ Released & Free Formaldehyde Content
 - ▶ Chromium Content
 - ▶ Other Metals Colorimetric Estimation

BURSTING STRENGTH TESTER

Tests performed

- ▶ Complies to ASTM D3786 & ISO 13938
- ▶ Have facility to test using different test area as per requirements
- ▶ Can test for stress decay/Cyclic Expansion



PHYSICAL SECTION



- Specification tests – Yarn count, GSM, Fabric Count
- Pilling Resistance
- Abrasion resistance
- Security of Attachment



X-RITE SPECTROPHOTOMETER COLOR I5



- DE* Measurement
- Whiteness Index
- Effect of OBA
- Tint Evaluation
- 555 Sorting
- Hue Change Evaluation
- Multiple illuminant Evaluation

XENON ARC LIGHT FASTNESS TESTER – ATLAS C13000



- ▶ Colour Fastness to Light (Day Light Behind Window Glass)
- ▶ According to ISO105B02/ AATCC 16

ELECTROLUX – WASCATOR & WASHING MACHINES



- International Standardised Washing
- Have Facilities to comply ISO6330
- EU domestic washing machines - Miele
- US - Top loaders
- Dura Wash - to determine Durability to laundering



DURA WASH – PRINT DURABILITY TESTER & COMPLIES TO BS 7907 – NON GRIP ABLE COMPONENTS



- ▶ Print & Trim durability
- ▶ Complies to BS7907
- ▶ Most Efficient way to determine durability to washing

TRANSITION TRINOCULAR MICROSCOPE



- Fiber Identification
- As per EU Directives 1007
- AATCC 20
- ASTM D629
- JIS Methods





SUMMARY

- The lab with unmatched Infrastructure with more than 30 peoples strength.
- Customized reports and results delivery
- Wide testing scope Including toxic chemical testing like Azo, Phthalate, Pesticides, formaldehyde..
- ISO 17025 system driven process control.
- Updated with current procedures and regulations based on technical review



THANK YOU FOR THE
ATTENTION!